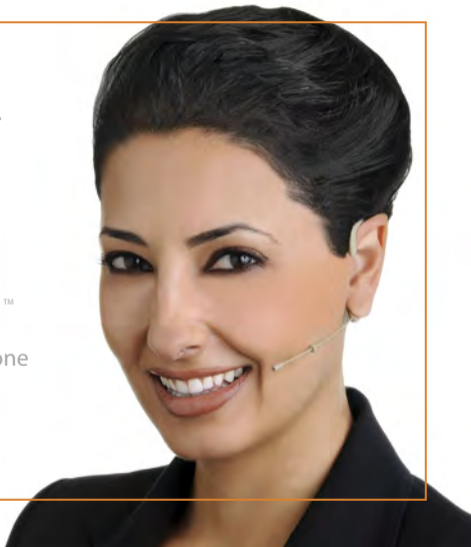




wi<sup>TM</sup> Sure-Fit<sup>TM</sup>

EL Series Earset/Lavalier Microphone

USER GUIDE



# CONGRATULATIONS



**Thank You For Choosing the Wi Sure-Fit™ EL Series Earset/Lavalier Microphone.**

Congratulations on your purchase of the Wi Sure-Fit™ EL Series Earset/Lavalier Microphone. We're confident you'll find it the finest, most natural sounding and most innovative earset and lavalier microphone available.

Please thoroughly read this User's Manual for all the features and information necessary to install and operate your new Wi Sure-Fit™ EL Series Earset/Lavalier Microphone.

For additional support, please visit [www.widigitalsystems.com](http://www.widigitalsystems.com)

# PACKING LIST

## What is included in the package?

Verify that you have received all of the items listed below.



Wi Sure-Fit™ Earset with  
Wi Simple-Twist Omnidirectional  
Detachable Microphone Capsule



Wi Simple-Twist™  
Detachable Earset Cable



Wi Sure-Fit™ Lavalier with  
Wi Simple-Twist Unidirectional  
Detachable Microphone Capsule



Wi Simple-Twist™ Detachable Adapters for use with  
Wi AudioStream™, AKG™, Shure™ Sony™, Audio-  
Technica™ and Sennheiser™ pocket wireless systems  
(If specified by part number)



Earset/Lavalier  
Cable Clip



Rubber Instrument  
Mic Clip



MIC  
Windscreen

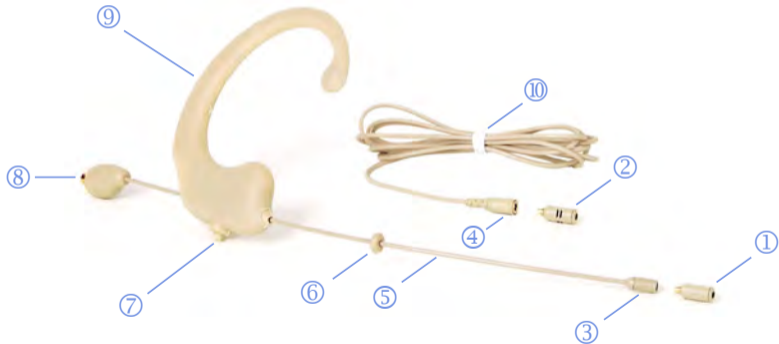


Carrying Case

## FEATURES

- ① **Removable MIC1:** Wi Simple-Twist™ omnidirectional removable microphone capsule model JM-ST350 for ear-worn, lavalier and instrument miking applications.
- ② **Removable MIC2:** Wi Simple-Twist™ unidirectional removable microphone capsule model JM-ST35U for ear-worn, lavalier and instrument miking applications.
- ③ **Earset MIC Port:** Simple-Twist removable microphone capsule port
- ④ **Lavalier MIC Port:** Simple-Twist detachable Lavalier cable with removable microphone capsule port
- ⑤ **Boom:** Sure-Fit bendable boom design
- ⑥ **Silicon Spacer:** Silicon cheek spacer
- ⑦ **Boom Lock:** Adjusting the boom length, left and right ear placement boom configuration and keeping boom securely in place
- ⑧ **Cable Port:** Simple-Twist detachable cable port
- ⑨ **EL Ear Mount:** Sure-Fit advanced ergonomic silicon ear mount model EL
- ⑩ **Lavalier MIC Port:** Simple-Twist detachable Lavalier cable

# FEATURES



## HANDLING

### Handling The Wi Sure-Fit EL Series

The Wi Sure-Fit EL Series is a high-precision instrument and it is designed for durability and flexibility. The following are some of the basic precautions to prevent damage to the Wi Sure-Fit EL.

- ✗ Do not bend the boom over sharp edges such as the end of your fingernail or twist the boom around a tight radius less than 1/2" diameter.
- ✓ Use the thumb and index finger to do small bends at multiple points of the boom to get the desired curvature.



**HANDLING**

- ✗ Do not bend and wrap the cables in any way that creates severe coiling or strain on the cables.



- ✓ Always detach the earset cable and the removable adapter when storing the Wi Sure-Fit microphone



## GETTING STARTED

### The Wi Sure-Fit Earset & Lavalier

Delivering unmatched value, comfort, sound quality and secure fit, the Wi Sure-Fit™ EL Series earset and lavalier microphone delivers three (3) applications in one versatile microphone including ear-worn, lavalier and video camera/instruments miking applications. Wi Digital Systems ultra-small removable MIC capsule mounted on an ultra-thin, rugged, bendable, adjustable length and incredibly lightweight boom captures vocals clearly with excellent rejection of wind and ambient noise. The Wi Sure-Fit™ EL Series is an excellent choice for pastors, artists, fitness instructors, speaking and singing performers, video camera miking and hard to MIC instruments.





**GETTING STARTED**

## Connecting The Earset Cable

The Wi Sure-Fit™ EL Series ultra-low-profile detachable cable delivers minimum visibility with maximum durability. Optional adapters give the Wi Sure-Fit™ EL series earset great flexibility for use with different pocket wireless systems including AKG™, Shure™, Sony™, Audio-Technica™ and Sennheiser™.

1. Locate the detachable earset cable and the included detachable adapter for the Wi AudioStream™ EL pocket portable digital wireless system.
2. Fasten the earset end of the earset cable to the screw connector located on the silicon ear mount.



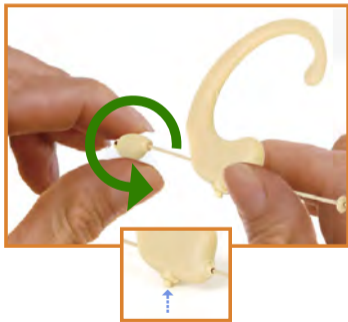
## EARSET CUSTOM FITTING

### Left or Right Ear Placement

The Wi Sure-Fit™ EL Series can easily be converted from right to left ear wearing preferences with a Simple-Twist™. This unmatched time saving feature delivers exceptional flexibility for venues needing to accommodate multiple users and their wearing preferences.

1. Press the boom locking switch located on the bottom of the Silicon ear mount.
2. Rotate the boom 180 degrees to the preferred ear wearing preference.
3. Release the locking switch when rotation is complete.

No need to rework the bend or reshape the boom again when switching from left to right ear placement. The boom maintains its original angle to capture vocals from the near-the-mouth position, from the opposite side.



## EARSET CUSTOM FITTING

### Wearing the Wi Sure-Fit Earset

The Wi Sure-Fit™ EL Series advanced ergonomic Silicon ear-mount design delivers an unmatched comfortable fit in seconds while ensuring secure boom placement even when the head moves, or when used with glasses or other head-worn accessories. This ultra-lightweight MIC is incredibly easy to wear even for an extended time.

1. Pull the “C” shaped Sure-Fit™ silicon ear mount wide open and clip over the ear
2. Loop the bottom part of the “C” shaped ear mount beneath the earlobe.
3. You should feel the Wi Sure-Fit earset gripping your ear and pressing out against your earlobe for comfortable secure fit.
4. The boom is designed to press and curve smoothly around the face. Adjusting the boom length and curvature are covered in the following section.



## EARSET CUSTOM FITTING

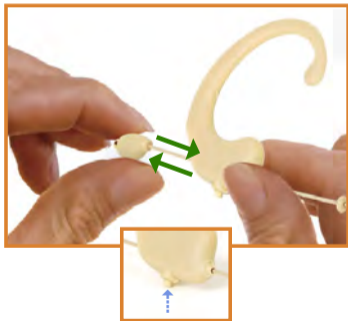
### Adjusting the Boom Length

The Wi Sure-Fit™ EL Series boom can easily be adjusted to the appropriate length and placement with a simple push of a button to capture the closest near-the-mouth vocals clearly and consistently. The boom locking mechanism keeps the boom securely in place to provide good gain and natural sound that doesn't change when the head moves.

1. Press the boom locking switch located on the bottom of the Silicon ear mount.
2. Slide the boom shaft to position the MIC capsule just behind the corner of your mouth when you are smiling.
3. Release the locking switch when adjustment is complete.



- Placing the microphone too far forward can result in breath-related pops.



## EARSET CUSTOM FITTING

### Adjusting the Boom Curve

The Wi Sure-Fit™ EL Series bendable boom can easily be adjusted to position the microphone tip as close as possible to the mouth for best vocal gain and clarity. Adjust the curvature of the boom only when necessary. If the microphone tip is away from the cheek, this will result in lower gain and more ambient noise.

- Using the thumb and the index finger, curve the boom with a sliding motion to form the boom and get the curvature you require.



- Avoid bending right at the capsule



- Do not bend the boom over sharp edges such as the end of your fingernail



- Do not pinch, twist or kink the boom around a tight radius less than 1/2" diameter



## EARSET CUSTOM FITTING

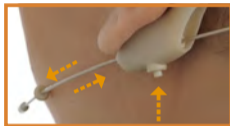
### Positioning The Microphone Capsule

The Wi Sure-Fit™ EL Series removable microphone capsule is located at the tip of the boom. The key to maximizing the sound quality is to locate the capsule as close as possible to the mouth without touching the face.

1. Press the boom locking switch located on the bottom of the Silicon ear mount.
2. Slide the boom shaft to position the MIC capsule just behind the corner of your mouth when you are smiling.
3. Release the locking switch when adjustment is complete.



- Placing the microphone too far forward can result in breath-related pops.
- Use the windscreen outdoors.



**EARSET CUSTOM FITTING**

## Using The Earset/Lavalier Cable Clip

The Wi Sure-Fit™ EL Series comes with an Earset/Lavalier cable clip to prevent movement of the cable from dislodging the earset. The clip is specifically designed to match the diameter of your cable, either 1.4mm or 2mm.

1. Locate the cable clip and gently pull the cable down into the rubber cable channel opening on the clip.
2. Attach the clip to the collar and leave enough slack in the cable such that the head can turn to both sides without tugging on the clip.



- We recommend leaving the clip attached to the cable when possible to minimize repetitive strain on the cable.



## LAVALIER CUSTOM FITTING

### Using The Lavalier Option

The Wi Sure-Fit EL Series detachable lavalier cable for use with the removable MIC capsule is ultra-thin and easily accommodates alternative mounting applications such as:

- Ties, Shirts, Jackets and Behind-the-Button Positioning
- In-Hair
- Video Camera Miking
- Hand Held Recorder Miking
- Hard to MIC Instruments

The Lavalier cable clip and the rubber instrument MIC clip can be used to customize the fit of the lavalier to be both comfortable and discreet. Ideal for presenters, reporters, worship leaders and pastors, broadcasters, musicians and many more!





## LAVALIER CUSTOM FITTING

### Replacing the Microphone Capsules

The Wi Simple-Twist™ detachable MIC capsules are designed to be interchangeable between the earset and the lavalier for minimum visibility with maximum flexibility.

1. Remove the MIC capsule from the earset or lavalier MIC port by unscrewing the MIC capsule counterclockwise.
2. Align the MIC capsule threads in a straight line with earset or lavalier cable MIC port
3. Fasten the MIC capsule from the earset or lavalier MIC port by screwing in the MIC capsule clockwise until **SNUG!** **Be certain not to overtighten.**



#### AVOID ACCIDENTAL CAPSULE THREAD STRIPPING!

- **Be certain to align the MIC capsule threads in a straight line**
- **Be certain not to overtighten.**



## PRODUCT SPECIFICATIONS

### Wi Sure-Fit EL Technical Specifications

#### Mechanical Specifications

Ear Mount:	Sure-Fit™ Ergonomic Silicon Ear Mount
Ear Placement:	Simple-Twist™ Left/Right Ear Placement
Boom Type:	Simple-Twist™ Bendable, Adjustable Length Boom with Locking Mechanism
Cable Type:	Simple-Twist™ Detachable Cables

#### Omnidirectional Capsule MIC Specifications Model JM-ST350 (If specified by part number)

Frequency Response:	20Hz to 20kHz
Operating Current:	Less than 500uA
Operating Voltage:	1.5V - 12V DC
Sensitivity:	-45dB+/-3dB/Pascal
Maximum SPL:	140 dB SPL max
Output Impedance:	2KΩ±30%
Capsule Type:	Simple-Twist™ Removable 3.5mm Capsule
Element:	Back Electret Condenser
Polar Pattern:	Omnidirectional



**PRODUCT SPECIFICATIONS**

## Wi Sure-Fit Lavalier Technical Specifications

### Unidirectional Capsule MIC Specifications Model JM-ST35U (If specified by part number)

Frequency Response:	50Hz to 15kHz
Operating Current:	Less than 500uA
Operating Voltage:	1.5V - 10V DC
Sensitivity:	-51dB+/-4dB/Pascal
Maximum SPL:	130 dB SPL max
Output Impedance:	1.5K $\Omega$ $\pm$ 30%
Capsule Type:	Simple-Twist™ Removable 3.5mm Capsule
Element:	Back Electret Condenser
Polar Pattern:	Cardioid (Unidirectional)



## DECLARATIONS

### Regulatory Compliance Information

---

#### Compliance Statement

---

We, Wi Digital Systems, Inc., declare under our sole responsibility that the Earset Microphone model EL Series to which this declaration relates is in compliance with the essential requirements of 2004/108/EC EMC, EN 55103-1, EN 55103-2, 2002/96/EC WEEE, 2003/108/EC and 2002/95/EC RoHS when used as specified.

**RECYCLING INFORMATION**

## Disposal and Recycling Information

---

### Correct Disposal

---

This symbol indicates that your product must be disposed of properly according to your local laws and regulations. When your product reaches its end of life, contact the retailer where the product was purchased or your local authorities to learn about recycling options. This product should not be mixed with other commercial waste for disposal.



## PRODUCT WARRANTY

### Product Warranty Terms

Wi Digital Systems, Inc. warrants that the Wi Sure-Fit EL Series is free from material defects and faulty workmanship for a period of twelve (12) months from the date of purchase. Wi Digital systems will repair or replace, at its option, any Product that breaches this warranty during said period. This warranty does not cover and is void with respect to (1) Products which have been improperly installed, repaired, modified or altered; (2) Products which have been subject to abuse, misuse, physical damage, exposure to fire, water or excessive moisture or dampness; (3) Products that are operated outside the limits of the technical specifications of the product.

Repair and/or replacement of the Wi Digital Systems product will be performed through using the Wi Digital Systems Return Material Authorization (RMA) procedure. The customer is required to contact Wi Digital Systems at [www.widigitalsystems.com](http://www.widigitalsystems.com) to obtain the approval and procedure for returning any product under warranty.

IN NO EVENT SHALL WI DIGITAL SYSTEMS BE LIABLE FOR ANY INCIDENTAL, CONSEQUENTIAL, DIRECT, INDIRECT, SPECIAL OR PUNITIVE DAMAGES WHICH ARISE IN ANY WAY OUT OF THE MANUFACTURE, SALE OR USE OF ITS PRODUCTS OR SERVICES. In the event that a court of competent jurisdiction determines that Wi Digital Systems is in breach of any warranty, the amount of recoverable damages shall be limited to the cost of the replacement of any Product found to be defective or nonconforming.

## PRODUCT WARRANTY

### Out of Warranty

Should your Wi Sure-Fit EL product not function properly after the warranty period has expired, please contact Wi Digital Systems Customer Care at [customercare@widigitalsystems.com](mailto:customercare@widigitalsystems.com)

### Limitations of Liability

Wi Digital Systems expressly assumes no responsibility for any error, omission, interruption, deletion, defect, delay in operation or transmission, communications failure, theft or destruction or unauthorized access to, or alteration of, any use of the Wi Sure-Fit EL product. TO THE MAXIMUM EXTENT PERMITTED BY APPLICABLE LAW, IN NO EVENT SHALL WI DIGITAL SYSTEMS OR ITS SUPPLIERS BE LIABLE FOR ANY SPECIAL, INCIDENTAL, INDIRECT, PUNITIVE OR CONSEQUENTIAL DAMAGES WHATSOEVER, INCLUDING, BUT NOT LIMITED TO, DAMAGES FOR: LOSS OF PROFITS OR REVENUES, LOSS OF CONFIDENTIAL OR OTHER INFORMATION, BUSINESS INTERRUPTION, PERSONAL INJURY, DEATH, LOSS OF PRIVACY, CORRUPTION OR LOSS OF DATA, FAILURES TO TRANSMIT OR RECEIVE AUDIO OR ANY OTHER PECUNIARY LOSS WHATSOEVER ARISING OUT OF OR IN ANY WAY RELATED TO THE USE OF OR INABILITY TO USE THE DEVICE OR THE SUPPORT SERVICES OR OTHERWISE IN CONNECTION WITH ANY PROVISION OF THIS AGREEMENT, EVEN IF WI DIGITAL SYSTEMS, INC OR ANY SUPPLIER HAS BEEN ADVISED OF THE POSSIBILITY OF SUCH DAMAGES.



The Sound of Digital Wireless Innovation

[www.widigitalsystems.com](http://www.widigitalsystems.com)

2013 Wi Digital Systems, Inc. All rights reserved. Stylized Wi logo is a registered trademark of Wi Digital Systems, Inc. in the United States and may be a registered trademark in other countries. Wi Sure-Fit and Wi Simple-Twist are trademarks are of Wi Digital Systems, Inc. All other trademarks included herein are the property of their respective owners. US and Foreign Patents Pending.

(Design and specifications subject to change without notice).